



**H.H. TECHNOFAB
CORPORATION**

Industrial Engineering, Civil and Mechanical Division



COMPANY PROFILE



H.H. TECHNOFAB CORPORATION

Industrial Engineering, Civil and Mechanical Division



Industrial Engineering, Civil & Mechanical Division

Contents:

- INTRODUCTION
- VARIOUS PROJECT IMAGES
- SCOPE OF SERVICES AND RANGE OF WORK
- MAJOR CLIENTS
- SOME MAJOR PROJECTS
- CLIENTS APPRECIATION
- APPRECIATION MEDALS
- LAST TWO YEARS WORK EXPERIENCE
- LIST OF STAFF WITH QUALIFICATIONS
- LIST OF EQUIPMENT, PLANTS, TOOLS & LABORATORY.
- FIRM STATUS





INTRODUCTION

Introduction >>>

Our rich Engineering experience and comprehensive in house capabilities enable our organization to assume total responsibility for diversified projects of varied dimension at our works and clients site, through our own resources.



We are an engineering company offering services in all the major engineering disciplines through the involvement of highly experienced professionals, technical executives and exceptionally devoted tradesmen. Team of our professional's work, in harmony and in coordination to produce excellent results which serves the moto of our company at its best.

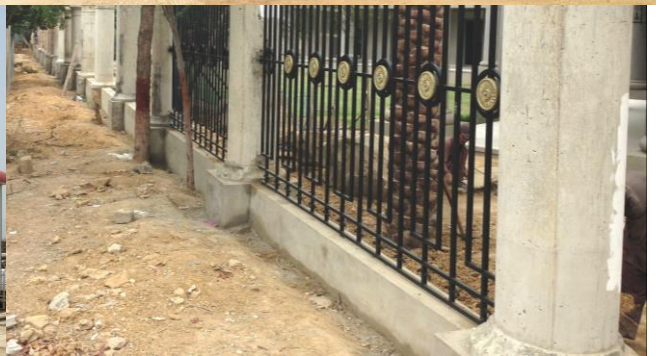
In the second decade of operation H. H. Technofab Corporation stands committed to efficiency and excellence with the hope that the industry will invite our organization for problem solving and technical assistance in all respective areas requiring the highest quality standards.

H.H. Technofab Corporation



Various Project Images:



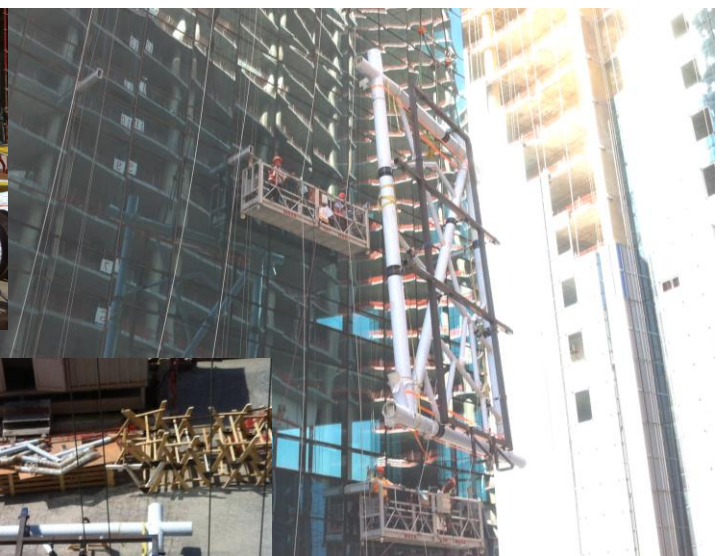
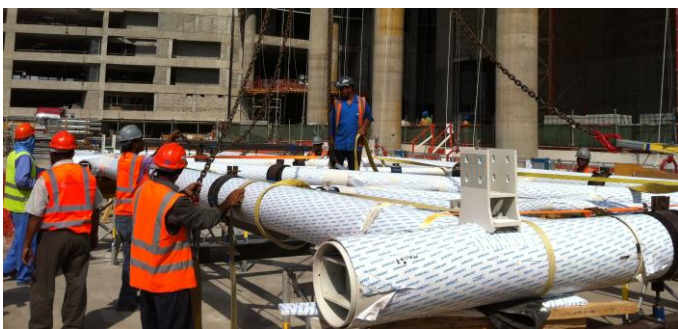
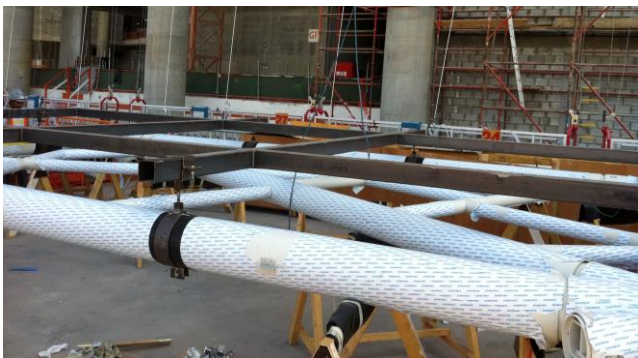








QATAR PERTOLEUM PROJECT





Scope of Service and Range of Activities

1. Fabrication of water & oil Tanks
2. Fabrication, Erection and Installation of flood light & transmission tower.
3. Fabrication of Fuel Storage Tanks of various capacities from 250 liters to 80,000 liters.
4. Fabrication of Acoustic (soundproof)/weatherproof canopies for Generators from 50 KVA Generator Set to 1.2 Mega Watt Generator Set.
5. Fabrication, Erection and Installation of Workshop/Warehouse/Steel Yard Sheds and all kind of Pre-Engineering Buildings.
6. Fabrication of MS Pipe Lines for Water Supply / Sewerage.
7. Installation & erection of plants and equipment.
8. Industrial piping.
9. Process plant erection.
10. Fabrication of components made to suite, clients design criterion.
11. Surface Coating by Sand Blasting, epoxy coating & Powder Coating
12. Structural bending of sheet in required section and plate rolling.
13. Hot dip galvanizing upto 120 micron.
14. Fabrication and erection of Aluminum Curtain walls and glazing partitions (complete in all respect).
15. Mobile Camps (Porta camps) of 20 ft., 40 ft., 6 Mt. and 12Mt for Accommodation Camps like Hospital, Kitchen, Laundry, School, Food Stores, Community Halls, Cymnazum, Dining/Recreation, Avionics Store, Avionics Trailers, MTS, TOC, Cleaning Shop, Maintenance, Ablution & Toiletries.
16. Supply and Installation of Underground Irrigation System / Water Sprinkling Systems.
17. Computerized drafting services.
18. All types of Aluminum section sizing and assembly.
19. All Kinds of Sand Casting Material like: Aluminum, Bronze, Copper, Ductile Iron and cast-iron.
20. All types of key equipments for execution of projects are provided on rental basis to our clients.

Exports:

Manufacturing of Export products like, Utilities Fixtures, Flanges, Vent Pipes, Fire Fighting Fittings, Manhole Covers, All kind of Fencing, Rail Guards, Road Cat Eyes, Crash Barrier, Casted and Extruded Ladders, Utility Markers, Sealing Flanges and other utility Parts.

Imports:

Sandwich Panel for Roof /Wall sheets made from G.I. Sheets, Rope Wire Hoist, Carnes and Gantry Crane- Single & Double Girders.



MAJOR CLIENTS

- ❖ Allied Engineering & Services Limited
- ❖ British Petroleum Pakistan
- ❖ MACPAC Shed
- ❖ Mandviwala Motors Shed
- ❖ Uni-Food Ltd:
- ❖ Dawn Herald Pakistan
- ❖ Kings Food Ltd
- ❖ CAA at Allama Iqbal International Airport, Lahore
- ❖ Shell Pakistan
- ❖ Engro Fertilizer Ltd
- ❖ National Foods Pvt Ltd
- ❖ Star Textiles
- ❖ SOGEA Pakistan Branch New Jinnah Airport Terminal Building.
- ❖ Boots Pakistan Ltd.
- ❖ Welcome Pakistan Ltd.
- ❖ Former Smith Kline and French Pakistan Ltd.
- ❖ Lodigiani Spa -- Fish Harbor Project.
- ❖ Clough Engineering Group
- ❖ Siemens Pakistan Ltd.
- ❖ Intairdrill Pakistan.
- ❖ Alcatel Pakistan ltd.
- ❖ Parker Drilling Inc.
- ❖ Echo West International Pvt. Limited.
- ❖ Lasmo Oil Pakistan Ltd.
- ❖ Foster Wheeler
- ❖ Promet Engineering(s) Pvt. Ltd.
- ❖ Ghazi Barotha Contractors
- ❖ National Development Complex
- ❖ Pakistan International Airline (Lahore)
- ❖ U.S. Embassy (Islamabad)
- ❖ B.L Harbert Intl (A project of US Embassy)
- ❖ Karachi International Container Terminal Ltd.



- ❖ Pakistan International Container Terminal
- ❖ Orient Engineering & Services / Orix Leasing Pakistan Limited
- ❖ Gwadar Industrial Estate
- ❖ Multinet Pakistan Private Limited
- ❖ Construction of Pre-Engineered Shed including Cladding.
- ❖ King Foods Pvt. Ltd.
- ❖ FM89
- ❖ Dawn News.
- ❖ Dawn Flood Relief.
- ❖ Multinet Pvt Ltd.
- ❖ Channel Tek Pvt Ltd.
- ❖ Sattar Industries
- ❖ Allied Engineering Ltd
- ❖ Allied Rental Modaraba
- ❖ Allied Commercial Pvt. Ltd.
- ❖ Orient Energy systems Ltd.
- ❖ Orix leasing Pakistan Ltd.
- ❖ Lucky Cement Ltd.
- ❖ Paragon Construction.
- ❖ Attock Cement Pakistan Ltd.
- ❖ ENI Pakistan.
- ❖ British Petroleum Pakistan.
- ❖ Weatherford Pakistan
- ❖ Schlumberger Exploration Pakistan
- ❖ M I Swaco Pakistan.
- ❖ United Energy Pakistan.
- ❖ Pakistan Oil Field.
- ❖ Pakistan Navy.
- ❖ Gasco Engineering PVT ltd.
- ❖ Lakhani Silk mills.
- ❖ Indus Hospital.
- ❖ Abu Dhabi Consulate.



- ❖ Bahrain Consulate.
- ❖ Hilton Pharma Pvt Ltd.
- ❖ Hilal Foods.
- ❖ Al Shaheer Corp.
- ❖ Oak Towers.
- ❖ Dubai Palace.
- ❖ Digital apparel.
- ❖ Rock Crete Pakistan.
- ❖ All Pakistan Newspaper society.
- ❖ Agha Khan University.
- ❖ Total Construction.



SOME OF OUR MAJOR PROJECTS



Allied Engineering Storage Tanks:



1. General Specifications:

2. Our double-wall fuel Storage tanks are designed for diesel or heavier fuels. They are not for storing gasoline. These tanks are double walled designed having two cylindrical tanks inside another. There is a small annular area between the two cylindrical tanks that will contain any leakage from the inner tank to prevent the leak from reaching the environment and for the adjoining system. The annular area can be monitored for leakage. These tanks are fitted with emergency vents and an overfill alert.



3. Fuel Transfer System:

Fuel level system from 2500 liters tank to 60 Kva Generator set.

Fuel lines system of 1" dia, with following details:



1. 220 V Diesel motor with pump, 1 H.P. (made in Italy or equivalent).
2. Motor starter with auto/manual operation with interposing relay (waterproof Fuji Japan).
3. Level sensor 2 nos. for level automation (RICO or equivalent).
4. Solenoid valve 220 V (CKD Japan or equivalent).
5. Complete electrical panel for switching with cable 4 x 1.5sqmm (for 10m distance from pump to Generator base tank. If distance increased, it will be charged

additionally).



4. Tank Filling System:

Fuel filling system from Mobile delivery tank to 2500 liters day Tank.

Filling lines will be of 1.5" dia, with following details:

1. 220 V Diesel motor with pump, 2 H.P. (made in Italy or equivalent).
2. Motor starter with auto/manual operation with interposing relay (waterproof Fuji Japan).
3. Level sensor 2 nos. for level automation (RICO or equivalent).
4. Solenoid valve 220 V (CKD Japan or equivalent).
5. For Installation at your site, transportation, boarding and lodging for two persons will be provided by AML

General Scope of work:

2. Complete fabrication of Steel Tank from Grade A-36 MS or equivalent
3. All flange fitting will be provided with counter flanges if required.
4. Tank system with pedestal mounted provided with lifting lugs.
5. Provision of ½" NPT socket at 80% and 20% for fuel level indication electrical switches.
6. Hydro test at 1 Bar with any reputable certification body.
7. Tanks will Sand blasted as per SA 2.5.
8. Outer shell of tank will be Painted with 2 coat of Epoxy based primer of JOTUN "Jotamastic" and 1coat of prime paint "Topcoat" of 120 DFT.

2. Heating System

2.1 System:

The jacketed storage tank will be link with heating System of 4-kw with air blower and the hot air will be recycle all the time 85% of its generation. It will keep diesel tank warm up to operational requirement within 10-minutes, the temperature will be on 45°C (if the atmospheric temperature is -7°C), it can vary and control as per your requirement.

2.2 Automation:

Digital Temperature indicator and Digital Temperature controller can be vary according to your operational requirement, Thermocouple (heat sensor) Heater elements, Air blowing System with 1-HP Electric Drive 1400-RPM, automatic programmer type Control Panel.

2.3 Safety:

The Unit will be electrically operated completely automatic with single touch operation and 100% safety devices including switches and valves for excess pressure release.

Installation and other scope of work for Genset Canopy:

- Complete fabrication of Canopy size: 20ft x 10ft W x 10ft H, from Mild Steel A-36
- Canopy will be design to take the load of 20 Tons with canopy.
- Installation of connection Flanges 4" x 2 , 5" x 2, Socket 2" x 1, 1" x 3 on front only.
- Installation of Brackets for Gas fittings (without any fitting)
- Installation of generator (without any fittings, piping and Isolators)
- Installation of 2 Fans on Roof (Fans provided by AESL)



Porta camps:





Gantry Crane 50 Tons:



Specification:

Design Codes:

Hot-rolled structural steel is designed in accordance with the AISC or British Standard BS 5950. Built-up frames and other welded members are designed in accordance with the American Institute of Steel Construction AISC "Specification for the Design, Fabrication and Erection of Structural Steel Buildings," Ninth Edition"



All welding conform to the requirements of the American Welding Society. Light gauge cold-formed members are designed in accordance with the requirements of the American Iron and Steel Institutes "Specification for the Design of Light Gauge Cold-Formed Steel Structural Member", 1986 Edition.



Design Loads:

Structures are designed to withstand the dead load and:

- (a) Live load (b) Prescribed wind load.

The design procedures follow the Metal Building Manufacturers Association's MBMA "Low Rise Building System Manual" 1996 Edition or as specified by project.

Material Specification:

Hot rolled sections are fabricated from material having a minimum yield stress of 345 N/mm² (50ksi) conforming to ASTM A36 or ASTM A-572 minimum yield stress of 275 N/mm² conforming to EN10025 S275.

Flange material for built-up sections are fabricated from material having a minimum yield stress of 345 N/mm² (50ksi) conforming to ATM A-572 Grade 50.

All galvanized light gauge cold-formed structural members are fabricated from steel having a minimum yield stress of 365 N/mm² with a galvanized coating of 275 g/m² conforming to JIS G3302 SGH490 or equivalent.

Aluminum Zinc coated steel and pro-painted Aluminum Zinc coated steel Sheeting, Eave Gutter, Downspout

Flashing and Trims have minimum yield strength of 345 N/mm² (50ksi) with approximately 55% aluminum and 45% zinc alloy coating of 150 g/m² (total both sides), conforming to ASTM A-792 Grade-50B.

Galvanized coated steel and pre-painted Galvanized coated steel Sheeting, Eave Gutter, Downspout, Flashing and Trims have minimum yield strength of 345 N/mm² (50ksi) with a galvanized coating of 275 g/m² conforming to ASTM A-653 Grade-50.

Aluminum and pre-painted Aluminum Sheeting, Eave Gutter, Downspout, Flashing

and Trims have minimum yield strength of 180 N/mm² (30ksi)

High tensile bolts conform to the requirements of ASTM A-325.

Diagonal brace rods and anchor bolts have minimum yield strength of 345 N/mm² (50ksi) conforming to ASTM A-572 Grade-50.



MACPAC Shed:



Mandviwala Motorrs Shed:



Uni-Food Shed:



Mandviwala Motors Shed:



Dawn News Shed:



King Food Shed:



Construction of Pre-Fab Building Systems at New Terminal Complex at Allama Iqbal International Airport, Lahore



Gwadar Monument:



Porta Cabins:

The versatility of HHTC's Modules design techniques is particularly well suited to commercial structures, which can be used for anything from real estate sales office to motels. Structures can be transformed into a virtually unlimited variety of configuration and can even be designed with multi storey capabilities.

Product Range:

- ISO Marine Converted Porta-Camps
- Fabricated Porta Camp of 10 x 10ft to 13ft wide
- Cold Rolled Galvanized Pre-Painted Sheet Porta Camps.
- Polyurethane Sandwich Panel Porta Camps.
- Complete Wood Joisted Porta Camps.
- Multi-Storey Stackable Porta Camps.

Shell Container



Engro Container:



GI Sheet & Sandwich Panel Container:





Other Large Projects with Complete Project Details:

SOGEA Pakistan Branch New Jinnah Airport Terminal Building.



Our last sizable project, which we completed successfully, was the fabrication and erection of Mild Steel, Stainless Steel and Aluminum finishing joineries. We also fabricated and installed specialized secondary structure nosing weighing 20 tons and drainage accessories at Quaid -e- Azam international Airport, Karachi.

We worked as one the largest subcontractors to French company M/s Sogea Pakistan who were awarded the main contract.

Appended below is a brief summary of our involvement in the building and site development of the above-mentioned project specially highlighting the fabrication and erection works.

1. We have largely used Aluminum profile of 200 x 70 mm which is the largest profile used in Pakistan covering an area of 12000 Square meters in curtain walls with 31mm thick Sietral Glass.
2. Glazing partition with 6 mm wire mesh fireproof glass approx. 700 square meters.
3. Divider Screens between International and Domestic wings approx. 250 square meters.
4. Doors, windows, main entrances, automatic doors and smoke outlets.
5. Provision of Seismic joints in full length glazed curtain walls.
6. We have fabricated at our workshop all steel and stainless steel support devices and inserts for Aluminum Curtain Walls.
7. Sheet metal Expansion Joint on entire project.
8. Fabrication and erection of 63-meter long Visitors Bridge in mild steel rectangular piping (150 x 300 x 12) mm.
9. Erection & Installation of Traveling Crane 20 Tons.
10. Fabrication of ladders, Stairs & Cat Ladders for entire project site.
11. HVAC Piping jobs complete with testing reports.
12. Erection of Flood Light Towers & Light Poles.
13. Scaffolding of all types having serviceable height upto 45 meters.
14. Hand balustrades, windows & louvers.
15. Mild steel section modular panel.



16. Fabrication and erection of steel screens for faces sewage station.
 17. Steel Grating and Checkered Plate Coverings.
 18. Fabrication and Erection of Trusses of metal work in shed of 40 x 80 x 6 meters
 19. Nozzing with Epoxy coats in Apron area approx 24 tons.
 20. Under ground water irrigation system.
 21. Aluminum foot step guard Nozzing at entire Departure Bridge.
 22. Stainless steel Chandler hanging Hoist and inserts with Installation.
- It is our privilege to have completed 80% of the total fabrication job and installations of Jinnah Terminal in a record period of 2 years.

Boots Pakistan Ltd.

1. Complete fabrication and erection work in Pharmaceuticals project of Boots Pakistan Ltd.
2. More than 12000 Nos. mild steel and 300 Nos. stainless steel Pallets of 16 BWG.
3. Complete Racking system for Raw material store, Bottles store, Finished goods store, Spare area and cold storage.
4. Design and Fabrication of stainless steel Bottle washing plant and Dryer.
5. Stainless steel Vessels of assorted size approx. 50 Nos.
6. Fabrication and Erection of Monorail of 2 Tons.
7. Fire exits stairs of mild steel Checkered plates.
8. Stainless steel ladders and platforms.
9. Erection and Installation of Glatt Fluid Bed dryer.
10. Stainless Steel double Cone blender 1200 Liters capacity.
11. Stainless steel Powder mixing Drum.
12. Mild steel Ladies and Gents Lockers 1000 Nos and M S Cabinets.
13. Fabrication and Erection of M. S. Shed for storage of drums covering an area of 12600 square meters.
14. Fabrication and Fixing of Industrial Kitchen, shelves, Cabinets, exhaust hood and other Kitchen related items.
15. Stainless steel Conveyers upto 90 ft long for packing halls.
16. Strackable Drum Pallets 500 Nos.
17. Stainless steel cabinets, Dispensing Table, trays, trolleys, and stainless steel hoods.
18. Complete boundary wall Grills with chain links and H D Gates.
19. Stainless steel jacketed Vessels with Platform.
20. Erection and Installation of Johnson filter press, Blenders and mezzanine floor.
21. Complete Mild steel structure shed for cycle stand.
22. Over Head diesel storage tank.
23. Fabrication of Burning Chamber.
24. Installation and commissioning of fresh Air and Ventilation ducts.
25. Shelving system for Engineering store with Mezzanine floor.
26. Stainless steel and Mild steel Grating in Production area and HVAC plant room respectively including Checkered plates footboards.
27. Installation of Gas line, Water line and Air intake lines.



28. Erection of Pipe structure for Green house.
29. Heavy Duty Sheet Metal Doors with insulation and locking system of complete project.
30. Galvanized sheet Cable trays and trenching at entire project site.

Welcome Pakistan Ltd.

1. Erection and fabrication of Boiler chimney 18 inches in Dia x 40-ft. height.
2. Kerosene storage tank of 10000 liters.
3. Racking system in warehouse and in stores.
4. Mild steel Pallets of 16 BWG 2000 Nos.
5. Stainless steel Conveyer of 120 Rft.
6. S.S Trolley of different size and type with S.S. Trays
7. S.S Laminar flow stand, steel Hatch, shoes barriers, towel stands, cabinets, stainless steel sinks and many other utilities in new project.
8. Fabrication and Jacketing of 1500 liter service vessel.
9. Supply and installation of GI pipe lining for pesticide plant.
10. S.S Trolleys, S.S assorted size boxes and working benches.
11. S.S air supply system in coating pan.

Former Smith Kline and French Pakistan Ltd.

1. Mild Steel drying Trolley with S.S 316 Trays.
2. Locking system for pallet racks.
3. Different type of cabinet and benches.

Lodigiani Spa -- Fish Harbor Project.

1. Mild steel Pier Fender with Rungs and bolts approx. 55 Tons.
2. Complete fabrication and erection of Floodlight tower weighing 130 Tons, and 26M high. All the towers finished in hot dip Galvanizing.
3. Mild steel Floating barges for bracing control of size 2m x 3m x 6m long weighing approx 30 Tons.
4. Fabrication of steel shuttering (Formwork) of different size and shape of 35M long approx. 30 Tons.
5. Heavy-duty main doors for new fish market with sliding system.
6. Erection of work shop shade.
7. Fabrication of mobile office container for site.
8. Fabrication of steel ladder for control tower building.
9. Fabrication of louvers type steel doors and windows for Transformer room.
10. Installation of checkered plate Trenching covers in all new sub station.
11. Erection and installation of heavy duty Steel gate for boundary wall.



Clough Engineering Group

1. Porta type mobile Containers complete in all respect with furnishing 40ft and 20ft 12 nos.
 - 1 No. Dinning Hall with Kitchen.
 - 3 Nos. Two men Bed room with attached bathrooms with Kitchen.
 - 4 Nos. Three Bedrooms with attached bathrooms.
 - 1 No. Office Block.
 - 2 Nos. Eight person four Bedrooms.
 - 1 No. Bathrooms and shower units with Laundry.
2. Boundary wall Fencing with Linked wires Net with Double Doors.
3. Complete Fabrication of workshop shed covering an area of 13000 square feet.
4. 120 different types of Cast in Items (embedded in concrete) weighing 60 Tons treated with Hot Dip Galvanizing.

Siemens Pakistan Ltd.

1. Generator Toe Trolley for 34,60,70 and 210 KVA Power Generating sets.
2. Canopy for the above trolleys.
3. Acoustic Canopy for 70, 34, and 210 KVA Generating Sets.
4. Mobile Containers 13 Nos, 20ft and 40ft.

Intairdrill Pakistan.

1. Barges 3m x 8m x 4m H x L x W.
2. Mobile containers site accommodation and ancillary services caravans of 40ft x 10ft.
 - 5 Nos. Bed sleeper with attached bathrooms.
 - 1 No. Dispensary unit with first aid room and attached bathroom.
 - 1 No. Dinning unit with kitchen.
 - 2 Nos. Office unit with bathrooms amenities.
3. Mild steel Lockers, cabinets and wardrobes.
4. Spreader bars and other fabrication items.

Alcatel Pakistan Ltd.

1. Manhole Cover frames 300 nos.
2. Manhole Cover 800 Nos with locking system.
3. Cable brackets for cable laying 1500 Nos. of 15 different types with hot dip galvanizing.
4. Under Ground Cable support brackets.
5. Cable clamps of aluminum die casting.
6. Pulling Hook for 18000 lines cable.
7. Cable curve support brackets with handle.
8. Lifting hooks for main hole covers.



9. Sign cones 300 Nos.
10. Road signs 120 Nos.
11. Knave cable clamps.
12. Cable Sleeves.
13. Cable Diversion Rollers 2 x 3 rollers 18 Nos.
14. Edge rollers.
15. Triple roller cable supports.
16. Cable splicing container.
17. Toe Drum Trailer capacity of 10 Tons, 4 Nos.
18. Panel Base access 100 nos.
19. Optic fiber splicing mobile unit with all the necessary equipment.
20. We provided some of the key equipment's on rental basis to facilitate site working.
 - Diesel driven Air compressor with jack and Trolley 2 Nos.
 - Pneumatic Jack Hammers 5 Nos
 - Cars, Trucks and pickups.

Parker Drilling Inc.

1. Sand Blasting and Epoxy Painting of Entire project.
2. Fabrication of Rig Deck.
3. Fabrication of skids and platforms.

Echo West International Pvt. Limited.

1. Fabrication of Cast in items for concrete foundation approximates 175 tons.
2. Fabrication of Gratings.
3. Fabrication of Vermin Screen.
4. Fabrication of Mobile Containers for offices 6 Nos.

Lasmo Oil Pakistan Ltd.

1. Fabrication Erection and Installation of work shop Shed and Storage Yard of 20 M x 120 M. approximate 140 tons.

Foster Wheeler

1. Design, Material Calculation and Drawing of workshop Shed and Storage Yard for Kadanwari Site with approval.

Promet Engineering(s) Pvt. Ltd.

1. Constructions of miscellaneous reinforce concrete foundations.
2. Construction of warehouse and workshop
3. Construction of condensate tank
4. Constructions of reinforce concrete in-ground structures-API separator; API Skimmed Oil Pit and Slops Tanks.
5. Construction of treated and Make-up Water Tanks.



6. Construction of Foundations for water Tank and Condensate Tanks.



Ghazi Barotha Contractors

1. Fabrication of concrete Batching Plant CO1 and CO2 Approx. 650 Tons.
2. Fabrication and erection of Cement storage Silos 100,200,300 Tons capacity.
3. Fabrication of Light Towers (200 Tons).
4. Fabrication of Water pipe line –14” x 7000M Long (130 Tons) with Both Sides Flanges.
5. Fabrication of Steel Retaining walls 100Tons.
6. Fabrication and Erection of steelyard, Fly Ash and Circular Storage Sheds (200Tons).
7. Fabrication of Embedded anchor pads (125 Tons).
8. Fabrication and Galvanizing of Anchorage Plates, Nozzing and Cast in Items.(300Tons)
9. Fabrication and Galvanizing of Cat Ladders (34tons).
10. Fabrication of UG and Tower Lodigiani of Different heights, complete with Nuts and Bolts (250Tons).
11. Fabrication Steel Floating pontoons.
12. Fabrication of Conveyors 600x25m to 50m and Screw conveyors.
13. Fabrication and Galvanization of lifting Device.
14. Fabrication of Crane Beams (160Tons).
15. Fabrication and erection of Bantonite Klin.120 Ton Capacity/Hour.
16. Fabrication of Complete Stac Launching and Pads (300Tons).
17. Fabrication of 50 SWL Gantry Crane.
18. Fabrication of Concrete Jumbo (45Tons).
19. Fabrication of Steel Shuttering and Base of Bridge Beams length =35 Meters. (125Tons).
20. Special Steel Supports Beams (75Tons).



National Development Complex

1. Supply and fabrication of heavy duty lifting beams
2. fabrication of O Rings
3. Misc fabrication like chain rail etc.

Pakistan International Airline (Lahore)

1. Construction of Cargo Sheds (Area 65000 Sqft)
2. Construction of Custom Sheds (Area 25000 Sqft)
3. Construction of Fruit Sheds (Area 20000 Sqft)
4. Various extension Shed to existing Building.

U.S. Embassy (Islamabad)

1. Complete Setup of Camp consisting of 25 Porta Camp Units.
2. Installation of Water Pipe Line for Camp.
3. Installation of Sewerage Pipe Line for Camp
4. Electrification of mobile camps consisting of 24 Nos. of Containers with Generator.
5. Complete Base Camp Setup.
6. Supply of Mobile Units with different configuration about 75 Units.

B.L. Harbert Intl (A project of US Embassy)

1. Fabrication, erection & installation of warehouse shed, living unit shed, office unit, canteen and ablution units made by sandwich panel & G.I. Sheets.



2. Providing, fabrication and installation of Chain Link Fencing at **Tennis Court**. 109 LM
3. Providing, Fabrication and installation of Chain Link Fencing at **Basketball Court**. 75.5LM Size: 3m high x Main column 88mmØ pipe i/c 3mm thick sheet Steel Chain Link fence Fabric, Galvanized @ 25mm x 3.7mm mesh, Selvage: Twisted at top selvage and knuckled at bottom. Post and line caps: Hot-dip galvanized pressed steel with Jotun Epoxy paints with steel caps
4. **OBO Living Unit** 10ft Width x 20ft Length x 10ft Height fabricated from MS sheet 2mm thick well furnished with complete insulation and accessories used in living unit for foreign officers. Dismantling & Relocating of Gazebo and Parking shed
Firefighting system of G.I Pipe 2" dia with 3Nos. of sprinkler in each room as per existing system cost including all material installation and hydro testing as per our drawing connecting with fire pump pressure unit at other end of wall
5. **Steel structure**
Shed #1: size 52.2m x 13.5m = 705 sqm
Shed #2: size 77m x 13.5m = 1039.5 sqm
Fabricated from G.I. Sheet 2mm thick Z purlins of 200mm x 65mm x 55mm with rectangular pipe of 100mm x 50mm x 2mm thick with 300mm slope on one side for easy flow of water with roof cladding G.I Sheet of 0.4mm thick
6. **Steel structure Roof Trusses of temporary CST Camp**
Roof Trusses: size 81m x 11m = 891 sqm
Fabricated hot rolled hollow tubes with complete roof and soffit cladding of 0.7mm thick pre-painted profiles from G.I. Sheet 2mm thick Z purlins of 200mm x 65mm x 55mm with rectangular
7. **Steel structure Walkway Platform of temporary CST Camp**
Walkway: size 81m x 2m at 3 height running with containerized camp with CST pre-fabricated stairs A & B
8. **Steel structure Roof Trusses of temporary CAW Camp**
Roof Trusses: size 51m x 11m = 561 sqm
Fabricated hot rolled hollow tubes with complete roof and soffit cladding of 0.7mm thick pre-painted profiles from G.I. Sheet 2mm thick Z purlins of 200mm x 65mm x 55mm with rectangular
9. **Steel structure Walkway Platform of temporary CAW Camp**
Walkway: size 51m x 2m at 3 height running with containerized camp with CAW pre-fabricated stairs on both ends of CAW camp with complete handrails and guardrails on platform and stairs and landings



Karachi International Container Terminal Ltd.

1. Supply & Fabrication of Living Unit, Office Unit and store purpose container made by marine & sandwich panel containers.

Pakistan International Container Terminal

1. Fabrication, erection & installation of sandwich panel room at PICT.
2. Supply & fabrication of chain link fencing.

Orient Engineering & Services / Orix Leasing Pakistan Limited

1. Fabrication of Sound Proof/Acoustic Canopies for 250 KVA, 360 KVA, 500 KVA & 1 Mega Watt Generators.
2. Fuel Tanks of different capacities ranging from 600 US Gallon to 8000 US Gallons.

Gwadar Industrial Estate

1. Construction of Entry Monument from Pre-Engineered Steel Structure with Aluminum Cladding and Civil Work at Gwadar Industrial Estate, Gwadar.

Multinet Pakistan Private Limited

1. Fabrication and installation of ADM Units at different cities of Pakistan
2. Fabrication and installation of Bathroom at different cities of Pakistan
3. Fabrication and installation of Living Units at different cities of Pakistan

King Foods Pvt. Ltd.

1. Warehouse Shed and workshop Shed size: 16ft Width x 85ft Length x 14ft height with prime paint with top coat including anchor bolts, drip trim end top mastic, all connection bolts, sheet fastener SDS screws with rubber washer & cap, curved panel, with cladding up to 2.440M from FFL of G I on both sides color sheet of 0.05mm thick (imported). Erection and Transportation, loading and unloading of complete building material at your proposed site with proper stacking with erection and installation of shed

Channel Tek

1. Fabrication of Outdoor Broadcasting Van (20 ft long).
2. Complete overhead structure for electrical fixtures at Broadcasting Studio.
3. Miscellaneous items for Studio lightning fixtures.
4. Fabrication of Outdoor Broadcasting Van (OB / APV)



Sattar Industries

1. Steel structure size: 50ft Length x 39 ft Wide x 13ft Height
2. With prime paint with top coat including anchor bolts, drip trim end top mastic, all connection bolts, sheet fastener SDS screws with rubber washer & caps.
3. Curved panels, with cladding at all roof of shed of corrugated G I sheet on both sides color of 0.5mm thick (imported), cladding at wall with corrugated G I sheet 0.5mm thick from Roof level 1500mm

CAT THE RENTAL STORE / Allied Rental Modaraba

1. Fabrication of Acoustic & Radiator Canopies i.e. 07 Nos. Power Containers, Converted from High Cube container 40' x 8' x 9.5'
2. Fabrication of Sound Proof Canopies i.e. 08 Nos.,
 - **Body:** The outer skid will consist of a Mild Steel hot rolled sections base frames; all pillars and roof structure
 - **Exhaust:** Silencer was installed in the enclosure and connected to the engine through flanged pipe work and flexible. Silencer & flanges was painted with heat resistance up to 600 degree Celsius
 - **Finish:** The canopy was painted with 02 coats of ICI zinc oxide primer & final paint with 02 coats of ICI synthetic enamel.
 - **Sound Level:** Sound level of acoustic enclosure after complete installation was be 85dba (A) at 2 meter.
3. Fabrication of Sound Proof/Acoustic Canopies for 50 KVA to 1275 KVA complete with installation
4. Fabrication of Weatherproof canopies of various capacities.
5. Fabrication of Overground and underground Fuel Storage Tanks of various capacities from 250 ltrs to 25000 Liters Capacity both Rectangular type and Cylindrical Type.
6. Fabrication of double wall fuel storage Tanks of various capacities.
7. Fabrication of Fuel heating Tanks with Rapture Tanks of 800US Gallon.
8. Pre-Engineered Shed at Port Qasim (Area 5000 Sq.ft).
9. Fabrication of weatherproof trolley mounted canopies of various capacities.

Allied Commercial Pvt. Ltd.

1. Fabrication of Acoustic/Sound Proof Canopies for Genset 3512 (Qty 32 Nos.)
2. Fabrication of Acoustic/Sound Proof Canopies for Genset 3406C (50 Nos.)
3. Fabrication of Acoustic/Sound Proof Canopies for C-18 700 KVA (20 Nos.) with complete installation and paint job
4. Super Silenced Canopies for 3406C-400 KVA Genset, Sound level of acoustic enclosure after complete installation will be within 85dba at 1 mtr at 75%, Canopy for C18-700 KVA Genset, Canopy for C32-1000 KVA Genset, Canopy for 3512-1275 KVA Genset with base tank 1,600 liters



Attock Cement Pakistan Ltd.

1. Fabrication and supply of Guardrooms size: 6ft x 4ft x 8ft height (fabricated from G.I Sheet Container based on skid & insulated with 25mm polystyrene sheets & 11mm Thick MDF Laminated sheet on both side furnish interior walls & ceiling)
2. Steel structure size: 24m Width x 36m Length x 6m height with prime paint with top coat including anchor bolts, drip trim end top mastic, all connection bolts, sheet fastener SDS screws with rubber washer & cap, curved panel, with cladding up to 2.440M from FFL of G I on both sides color sheet of 0.05mm thick (imported). Erection and Transportation, loading and unloading of complete building material at your proposed site with proper stacking with erection and installation
3. Fabrication of Porta Camp Room for Fire Extinguisher Cylinder with Sandwich Panel of 50mm thick with PU of 35 kg/m³ density with both sides Aluzinc sheet of 0.5 mm thick with 60 micron paint of both sides

British Petroleum Pakistan E&P Inc. Bahria Complex 1, Karachi.

1. Steel structure size: Length 80ft x Clear Span 40ft x Eave Height 13ft Main frame at both ends, roof & wall cladding with 22 gauge Galvanized pre-painted finished steel panels, Erection and Transportation, loading and unloading of complete building material





2. Supply of Mobile Bathroom Units fabricated from Sandwich Panels of 50mm thick with PU of 35 kg/m³ density of both side Aluzinc sheets of 0.5mm thick with 60 micron paint of both sides with imported Stainless Steel sanitary fittings size of Bathroom 1m x 2m with MS Skid Mounted and balanced lifting eyes.



3. Porta Cabins size: Length 40ft x Width 10ft x Height 8ft complete furnished with living accessories for 8 persons per container with bunker beds, side tables, wardrobes, PC tables, split A/Cs, fire alarms, sprinklers, standard electrification job, tinted windows, insulated enclosures, additional roof canopy for waterproofing other accessories. 06x 40ft, 05x 30ft for middle staff 05x 30ft for Executive staff living purpose has been provided to British Petroleum Pakistan and complete camp is in running condition currently



4. Senior Recreation Hall size: Length 30ft x Width 30ft x Height 8ft and Junior Recreation Hall size: Length 40ft x Width 30ft x Height 8ft complete furnished with split A/Cs, fire alarms, sprinklers, standard electrification job, tinted windows, insulated enclosures.



5. Kitchen with Mess Hall size: Length 80ft x Width 40ft x Height 8ft complete furnished with split A/Cs, fire alarms, sprinklers, standard electrification Job with double and single doors and windows at appropriate locations





All Pakistan Newspaper Society (APNS)

Complete pre-fabricated building approx. 27,000 Sq.ft with steel columns, beams for mezzanine floor and roof structure with best quality engineering and finishing

Middle session of Erection



Almost on final stages





APNS - Corridor @ First Floor



APNS - Front View





The Indus Hospital

BLODD CENTER

Client	Ayesha Blood Center
Contractor	H. H. Technofab Corporation
City/Country	Karachi, Pakistan
Status	Completed
Contact	Dr. Waseem Ahmed / Dr. Saba Jamal
Location	Korangi Crossing.
Tenure	2012
Volume	4,000 ft ²
Scope of Work	Fabrication, installation and commissioning of Sandwich Panel Fabricated Building completely insulated with 50mm PU with primary structure of standard HSS with fixed glass windows and sandwich panel doors and internal room partitions.



International Committee of the Red Cross

OFFICE CAMP

Client	International Committee of the Red Cross
Contractor	H. H. Technofab Corporation
City/Country	Peshawar, Pakistan
Status	Completed
Contact	Mr. Wafadar Shah (Field Officer)
Location	Jamal-ud-Din-Afghani Rd, University Town, Peshawar
Tenure	2010
Volume	3,200 ft ²
Scope of Works	Fabrication & installation of sandwich panel skid mounted camp complete with flooring, plumbing & electrification job of camp.





British Petroleum Pakistan Limited

LIVING AND OFFICE CAMP

Client	British Petroleum Pakistan Limited
Contractor	H. H. Technofab Corporation
City/Country	Hyderabad, Pakistan
Status	Completed
Contact	Mr. Riaz Ahmed Memon
Location	Matyari Oil Field. 50 KM from Hyderabad
Tenure	2008 - 09
Volume	Living and Office Camp for 100 Persons
Scope of Work	Fabrication, installation and commissioning of Accommodation Unit, Office Units, Conference Halls, Recreation Halls, Kitchen with Mess, Toilet and Shower Units including furniture, fixture and required accessories with high quality of electrification job of entire camp.





Candyland

NEW OFFICE HALL

Client	Ismail Industries (Pvt.) Limited
Contractor	H. H. Technofab Corporation
Consultant	Tai Brothers Associates
City/Country	Karachi, Pakistan
Status	Completed
Contact	Mr. Mehmood Tai
Location	Shahra e Faisal, near Baloch Flyover.
Tenure	July 2011
Volume	Officers' Hall for new launched product
Scope of Work	Fabrication, installation and commissioning of Light Gauge Steel Structural Office Hall with Recreation Hall and Toilet Units including cement board cladding and completely insulated with glass wool.





Burns Center, Civil Hospital Karachi

STORE ROOM @ 3rd FLOOR

Client	Burns Center Patient Welfare Society
Contractor	H. H. Technofab Corporation
Donor	H. Nizam Din & Sons
City/Country	Karachi, Pakistan
Status	Completed
Contact	Mr. Naveed / Mr. Siddiqui
Location	Burns Ward, Civil Hospital, Sadar Town, Karachi
Tenure	July 2011
Volume	1,204 ft ²



Scope of Work | Fabrication, installation and commissioning of Light Gauge Steel Structural Store Room with cement board cladding and completely insulated with glass wool, including flooring and electrical job for both rooms.





All Pakistan Newspaper Society

CLUB HOUSE BUILDING

Client	All Pakistan Newspaper Society
Contractor	H. H. Technofab Corporation
Consultant	System & Services
City/Country	Karachi, Pakistan
Status	Completed
Contact	Mr. Masood Hamid (Secretary General - APNS)
Location	Gulistan e Joher, Opp. to Safari Park.
Tenure	2011 - 12
Volume	12,000 ft ²

Scope of Work | Fabrication, installation and commissioning of a well design double storey building with combination of standard hot rolled sections as columns and beams with Light Gauge Steel Structural Roof with FCB cladding (MALAYSIA) on complete walls and Onduline Sheets (TURKEY) roof sheeting complete with excellent flooring and all the civil works required to complete the entire project.





Lakhani Silk Mills (Pvt.) Limited

FACTORY SHED

Client	Lakhani Silk Mills (Pvt.) Limited
Contractor	H. H. Technofab Corporation
City/Country	Karachi, Pakistan
Status	Completed
Contact	Mr. Anwer Lakhani
Location	Murtaza R/A, Korangi Industrial Area.
Tenure	2011
Volume	15,000 ft ²
Scope of Works	Fabrication & installation of two (2) pre-engineered buildings at 3 rd floor of factory complete with roof and wall sheeting with eave gutter and down spouts.





United Energy Pakistan Limited

FACTORY SHED

Client	United Energy Pakistan Limited
Contractor	H. H. Technofab Corporation
City/Country	Interior Sindh, Pakistan
Status	Completed
Contact	Mr. Riaz Ahmed Memon / Mr. Adnan Ahmed
Location	Various Locations, Interior Sindh
Tenure	2011
Volume	7,400 ft ²

Scope of Works | Fabrication & installation of pre-engineered buildings at various locations in internal Sindh Areas at Oil Fields Plant and Storage Purposes complete with roof and wall sheeting with double sliding doors.





Hilton Pharma Limited

CHILLER PLANT SHED AND CHILLER HANGER

Client	Hilton Pharma Limited
Contractor	H. H. Technofab Corporation
Consultant	S.M. ZUBAIR & CO.
City/Country	Karachi, Pakistan
Status	Completed
Contact	Mr. Asim Zubair
Location	Progressive Plaza, Beaumont Road.
Tenure	2011
Volume	12,430 ft ²
Scope of Works	Fabrication & installation of pre-engineered

building with separately fabricated heavy duty steel hangers for chiller ducts and 4' wide extended platform as walkway with LGSS walls and FCB paneling. Complete shed erected and installed at 2nd floor of RCC building. Complete with double sheeting and insulated with glass wool blankets in-between both sheets.



H. Nizam Din & Sons (Pvt.) Limited

FACTORY SHED

Client	H. Nizam Din & Sons (Pvt.) Limited
Contractor	H. H. Technofab Corporation
City/Country	Karachi, Pakistan
Status	Completed
Contact	Mr. Ali Ahmad
Location	Karachi Export Processing Zone.
Tenure	2010
Volume	8,180 ft ²
Scope of Works	Fabrication & installation of pre-engineered building with complete roof and wall cladding with a store officer room including single leaf sliding door.





Dawlance Pakistan

FACTORY SHED

Client	Dawlance Pakistan
Contractor	H. H. Technofab Corporation
City/Country	Karachi, Pakistan
Status	Completed
Contact	Mr. Ali Ahmad
Location	Landhi Industrial Area.

Tenure	2005
Volume	8,180 ft ²
Scope of Works	Fabrication & installation of pre-engineered building with complete roof and wall cladding.





Paragon Construction Pvt. Ltd.

STEEL FAÇADE PANORAMIC ELEVATOR

Client	United Bank Limited
Contractor	H. H. Technofab Corporation
City/Country	Karachi, Pakistan
Status	90% Completed
Contact	Mr. Noman Butt
Location	I. I. Chundrigarh Road
Tenure	2014-2015
Scope of Works	Fabrication, Installation & Erection of Steel Façade Panoramic Elevator

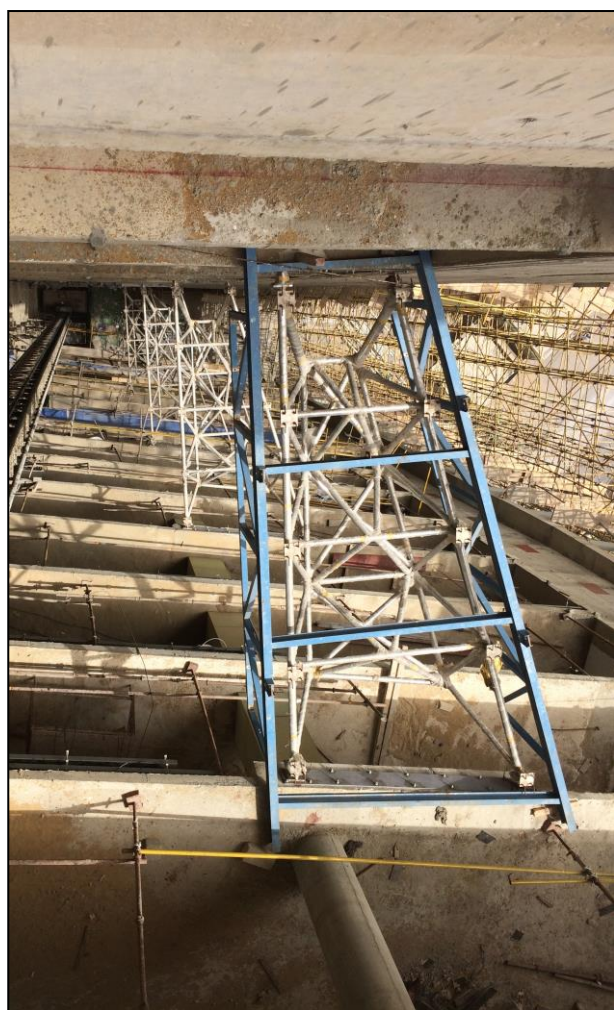




Paragon Construction Pvt. Ltd.

S.S BRIDGE

Client	United Bank Limited
Contractor	H. H. Technofab Corporation
City/Country	Karachi, Pakistan
Status	Completed
Contact	Mr. Noman Butt
Location	I. I. Chundrigarh Road
Tenure	2014-2015
Scope of Works	Fabrication and Installation of S.S Bridge

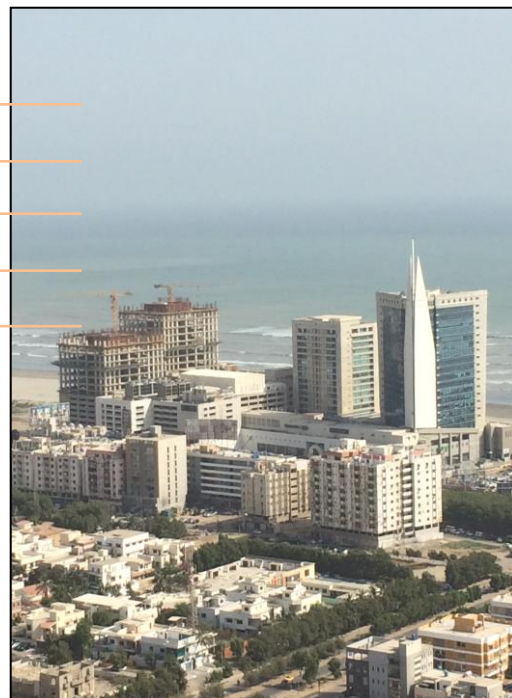




Paragon Construction Pvt. Ltd.

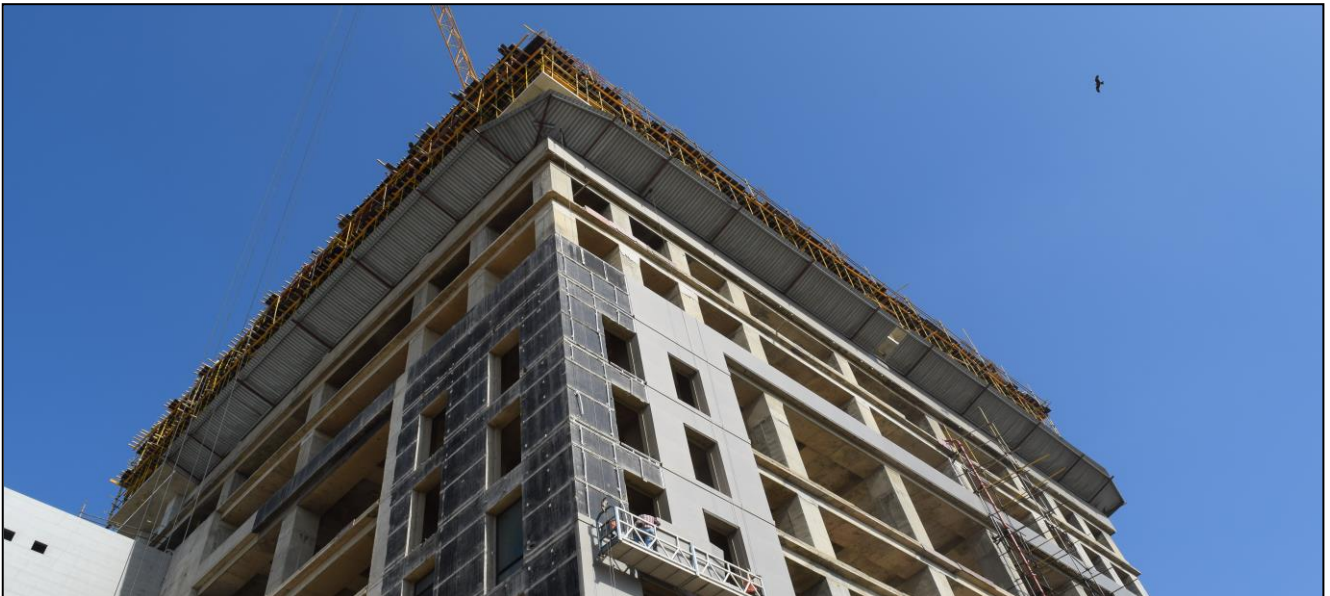
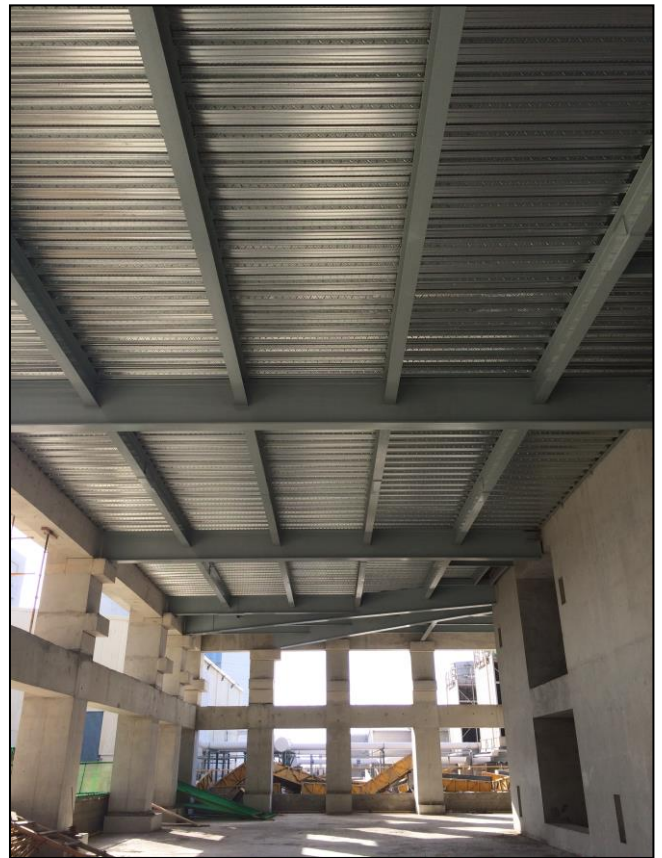
DOLMEN CITY TWIN TOWERS

Client	Dolmen City
Contractor	H. H. Technofab Corporation
City/Country	Karachi, Pakistan
Status	Ongoing
Contact	Mr.
Location	Harbour road, Sea View
Tenure	2014-2016
Scope of Works	Fabrication, Installation and Erection of Structural Steel Flooring of Tower A & Tower B 35 th Floor





Paragon Construction Pvt. Ltd.
DOLMEN CITY TWIN TOWERS



Lucky One Pvt. Ltd.

LUCKY ONE MALL SKY LIGHT

Client	Lucky One
Contractor	H. H. Technofab Corporation
City/Country	Karachi, Pakistan
Status	Ongoing
Contact	Mr. Aziz
Location	Federal B. Area block 9, Opp. UBL Complex
Tenure	2015
Scope of Works	Fabrication and Installation of Structural Steel Sky Light



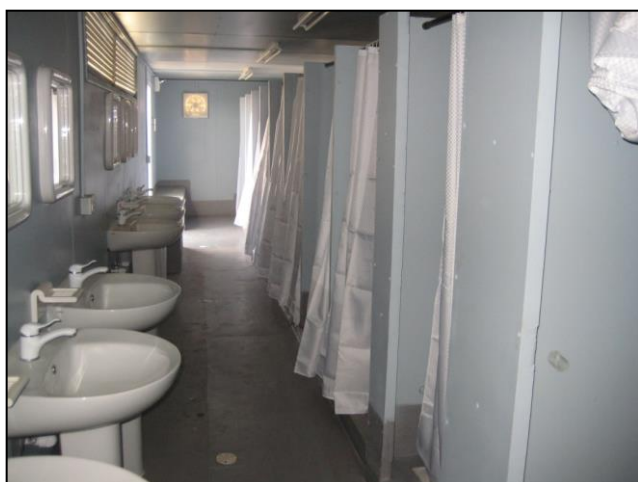


B. L. Harbert International

PORTA CAMPS

Client	US Embassy Islamabad
Contractor	H. H. Technofab Corporation
City/Country	Islamabad, Pakistan
Status	Completed
Contact	Mr. Paul Hadley / Mr. Darin Pederson
Location	US Embassy Islamabad

Tenure	2011
Volume	Toilet and Shower Facilities
Scope of Works	Fabrication & supply of containerized toilet and shower facilities at different construction sites.





Allied Engineering & Services (Pvt.) Ltd

DESEL GENSET CANOPY

Client	Allied CAT
Contractor	H. H. Technofab Corporation
City/Country	Karachi, Pakistan
Status	Completed
Contact	Mr. Faizan Zaheer
Location	Korangi Industrial Area

Tenure	2012
Volume	D-3406 400 KVA GENSET Canopy
Scope of Works	Fabrication & supply of sound acoustic and weather proof generator canopies





Allied Rental Modaraba

GAS GENSET CANOPY

Client	Allied Rental Modaraba
Contractor	H. H. Technofab Corporation
City/Country	Karachi, Pakistan
Status	Completed
Contact	Mr. Ali Ahsan
Location	Karachi.
Tenure	2013
Volume	D-3406 500 KVA GENSET Canopy
Scope of Works	Fabrication & supply of sound acoustic and weather proof generator canopies



Orix Leasing Pakistan

GAS GENSET CANOPY

Client	Orix Rentec
Contractor	H. H. Technofab Corporation
City/Country	Karachi, Pakistan
Status	Completed
Contact	Mr. Shakir Vasi
Location	Korangi Industrial Area
Tenure	2013
Volume	JMS 320 1275 KVA GENSET Canopy
Scope of Works	Fabrication & supply of sound acoustic and weather proof generator canopies





Allied Engineering & Services (Pvt.) Ltd

DESEL GENSET CANOPY

Client	Allied Machinery Ltd
Contractor	H. H. Technofab Corporation
City/Country	Karachi, Pakistan
Status	Completed
Contact	Mr. Ammad Hameed / Mr. Faizan Zaheer
Location	Korangi Industrial Area
Tenure	2013
Volume	D-3512 1275 KVA GENSET Canopy
Scope of Works	Fabrication & supply of sound acoustic and weather proof generator canopies





CLIENTS APPRECIATION

1. SOGEA PAKISTAN LTD
2. SCHLUMBERGER SEACO INC.
3. LODIGIANI SPA.
4. ALLIED ENGINEERING PVT. LTD.
5. INTERBETON, PORT QASIM.
6. ALCATEL PAKISTAN.
7. WELCOME PAKISTAN LTD.
8. SMITH KLINE & FRENCH.
9. WAZIR INDUSTRIES.
10. ENGRO CHEMICALS.
11. DYNO PAKISTAN LTD.
12. PARKE-DAVIS PAKISTAN LTD.
13. SOUTHERN GAS TRANSMISSION.
14. POLYRON LTD.
15. OCCIDENTAL OF PAK INC.
16. JOHNSON & JOHNSON LTD.
17. HOECHST PAKISTAN LTD.
18. CLOUGH ENGINEERING GROUP
19. INTAIRDRILL PAKISTAN.
20. SIEMENS PAKISTAN LTD.
21. PARKER DRILL INC.
22. ECHO WEST INTERNATIONAL PVT. LIMITED.
23. ENI LASMO OIL PAKISTAN LTD.
24. FOSTER WHELEER.
25. PROMET ENGINEERING (S) PTE LTD.
26. GHAZI BAROTHA CONTRACTORS.
27. VOLVO PAKISTAN LTD.
28. SEDCO FOREX SCHLUMBERGER PAKISTAN LTD.
29. KESTRAL SPD LOGISTIC
30. ENAR PETROTECH SERVICES.
31. AL-MAHD INTERNATIONAL
32. CONTRAK INTERNATIONAL INC C/O. US EMBASSEY, KABOUL
33. PAKISTAN INTERNATIONAL AIRLINE
34. CIVIL AVIATION AUTHORITY
35. PAKISTAN PTA LIMITED
36. COLOR ITAL PVT LTD
37. ORIENT ENGINEERING & SERVICES
38. ORIX LEASING PAKISTAN LIMITED
39. NESTLE MILKPAK LIMITED
40. USA CONSULATE, ISLAMABAD
41. CHAWALA INTERNATIONAL
42. BRITISH PETROLEUM PAKISTAN LIMITED
43. DAWLENCE PVT. LTD.
44. ATTOCK CEMENT LIMITED
45. PAKISTAN INTERNATIONAL CONTAINER TERMINAL

46. KARACHI INTERNATIONAL CONTAINER TERMINAL
47. B & L HARBERT INTERNATIONAL (PROJECT OF U.S. CSL.)
48. EPIK METIC (PROJECT OF U.S. CONSULATE)
49. PARAGON CONSTRUCTION PVT. LTD.
50. CG (CONSULTANT GROUP)
51. HILTON PHARMA PVT. LIMITED
52. PAKISTAN NAVY (PNS MEHRAN)
53. KING FOOD PRIVATE LIMITED
54. DG CEMENT
55. MAC PAC FILMS LIMITED
56. ATLANTIC MARINE SERVICES
57. BRITISH PETROLEUM
58. USMANI ASSOCIATES

MEDALS:





Last Ten Years Work Experience

1. Company's experience during past 10 years (Major Projects only)

S.#	Job Description	Year	Project Value In millions	Concern Name
1.	Fabrication & installation of Boundary Wall Grill	2013	18.8	All Pakistan Newspaper Society
2.	Fabrication, Forming and installation of LGSS Office Halls	2013	8.3	Lucky Cement
3.	Hall Type Porta Cabin Container Size: 40ft x 8ft x 8ft	2013	8	Gasco Engineering
4.	Acoustic Canopy Drop Over for G3516	2013	6.8	Allied Engineering & Services
5.	Sound Proof Canopy with installation for D3516 Caterpillar DG set (2275 KVA)	2013	6.7	Allied Rental Modaraba
6.	Fabrication & installation of Misc Structural Steel	2012	35	B & L Harbert Intl (US Embassy Islamabad)
7.	Fabrication, installation, erection and commissioning of Pre-fabricated building	2011	91	All Pakistan Newspaper Society
8.	Fabrication of Acoustic / Weatherproof Canopy for Generator Sets.	2010	140	Allied Engineering & Services Pvt Ltd.
9.	Fabrication, installation and commissioning of Porta Camp complete facility	2008	130	British Petroleum Pakistan.
10.	Office Unit Blocks & Ware housing made by G.I. Sheets and sandwich panels sheet	2007-2008	28	B & L Harbert Intl (NCC of American Conulate in KHI)
11.	Office Containers, Living Units & Bathroom Units made by Sea Containers 30 nos each. Different sizes	2006-2007	27	Multinet Pakistan Pvt. Ltd. (Various Cities of Pakistan
12.	Fabrication & Installation of Warehouse Shed made by Iron & Steel Structure	2006-2007	10	U.S. Embassy (Islamabad)
13.	Pre Engineering Metal Building	2005-2006	7.5	Dawlance Pvt. Ltd.
14.	Entrance Gate Fabricate from Steel Pipe and Fixations	2005-2006	18	Gawadar Industrial Estate



15.	Fabrication & Installation of SS Planters, SS Heavy Duty Dust Disposal Bins, Furniture for Concourse Hall, Bumper Guards at new Terminal Complex AllAP, Lahore.	2003	7.65	Civil Aviation Authority, New Terminal Complex, Allama Iqbal International Airport, Lahore.
16.	Fabrication & Erection of Custom Shed, Cargo Shed, Fruit Shed and other various extensions to existing sheds, at new Terminal Complex, AllAP, Lahore.	2003	12.52	Pakistan Intl Airline, New Terminal Complex, Allama Iqbal Intl Airport, Lahore.
17.	Fabrication of Acoustic / Weatherproof Canopy with Trolleys for Generator Sets.	2003	25	Allied Engineering & Services Pvt Ltd.
18.	Fabrication of Mud Tanks, Lifting Collars & Bins	2002-2003	4.5	Schlumberger Pakistan
19.	Fabrication of Septic Tanks and Mobile Security Offices.	2002-2003	1.6	LASMO Oil Pakistan Limited.
20.	Fabrication, erection & Installation of Rice Processing Plant	2002	6	Al-Mahd International, Site, Karachi.
21.	Fabrication, manufacturing and Casting of Mild Steel /Aluminum and Bronze Products.	2000-2003	27.5	Fatema Trading Co LLC, Duabi, UAE
22.	Steel Structures Work for Ghazi Barotha Power Project at Attock	1996-2000	126	Ghazi Barotha Contractors, Hattian, Attock



List of Staff with Qualifications

S. No.	Name	Designation	Qualification
01	Quaid-e-Johar	Managing Director H.H. Technofab Corporation	BE (Civil), Metallic Structure Designing & Fabrication
02	Alamdard Hussain	Director (Technical) H.H. Technofab Corporation	BE (Mech), Basic Drafting, AutoCAD
03	Ali Kenan	Director (Sales & Marketing)	MBA (Finance)
04	Danish Darugar	Sales Director (Finance)	BBA (Hons)
04	Shahzad Ahmed	Manager Business Development	MBA (Marketing)
05	Moiz Zainuddin	Administration	B.Com
06	Abbas Moiz	Finance Manager	B.Com
07	Aamir Imtiaz	Enquiry Manager	M.A Economics
08	Murtaza Ali	Purchaser	Intermediate
09	Hussain Patan	Asst. Store	Intermediate
10	Mustansir	Accountant	B.Com
11	Noman Hanif	Civil & Structural Engineer	B.E. (Civil)
12	Saima Iqbal	Civil Engineer	B.E. (Civil)
13	Moiz Hussain	Purchaser	B.Com
14	Sagheer Ahmed	Site Supervisor	Intermediate
15	Fouzia Ameer	Office Assistant	B.A (Economics)
16	Nayyar Badar	Tel Operator	Intermediate (Arts)
17	Danish Tahir	Mechanical Engineer AutoDESK Certified	BS (Mechanical) AutoCAD Draftsman
18	Shoaib Akhter	Site Engineer	BS (Civil)



19	Asgher Bhai	S. Tax Advisor	B.Com
20	Sharfuddin	Head Store Keeper	Intermediate
21	Peter Anthony	Store Keeper	Intermediate
22	Fayyaz Ahmed	Asst. Accountant	M.Com
23	Zia Mughal	Asst. Procurement Manager	Intermediate
24	Tariq Saeed	Structural Engineer	B.E. (Structure)
25	Shahab Aftab	Engineer & Consultants	B.E. (Mechanical)



List Of Equipment, Plants, Tools & Laboratory.

(A) PLANT AND EQUIPMENT'S.

FABRICATION/WORKSHOP :

1. Iron worker 90 Tons ScotchMan USA. 90 Tons.	02 No.
2. Iron Work Mechanical Japan. 120 Tons	01 No.
3. Bend Press Bronx England. ½" Thick	01 Nos.
4. Pipe Benders.	02 Nos.
5. Shear GMS Holland. 6mm x 3.67m	01 No.
6. Sheet Pipe Roller. 1/2" thick x 5 ft.	02 No.
7. Pipe Rolling Machine. 20 mm x 7 ft.	01 No.
8. Manual Sheet Bending Machine. 2mm Thick Sheet	04 Nos.
9. Angle and Profile Bending Machine upto L 6" x 6" x ½" and [8" x 3" heavy duty type (Local)	01 No.
10. Lathes Machine BECO AND PRATT & WHITNEY. 7'-6'-5'	03 Nos.
11. CO2 Continuous Wire Welding Machine	03 Nos.
12. Welding Transformers 200 AMP.	22 Nos.
13. Welding Generators. DC	12 Nos.
14. Argon Welding Set Miller U.S.A.	05 Nos.
15. Plasma Cutting upto 45mm	01 Nos.
16. Auto Gas Cutter for sheet cutting	12 Nos.
17. Bench Drill Machines.	05 Nos.
18. Gear Drill Machines.	02 Nos.
19. Universal Radial Drill Machine (England) upto 2" Dia	01 No.
20. Heavy Duty Power Tools and Grinders.	30 Nos.
21. Hilti Drill Equipment completes range.	09 Nos.
22. Plenty of Hand and Power Tools.	
23. Plasma Cutting Potter 12M x 1.5M x 30mm THK	01 No.

(B) POWER GENERATORS:

24. Diesel Generators Lincoln, Hobart 165 KVA	01 No.
25. Mobile Generator (England) 146 KVA	01 No.
26. Mobile Generator (Stamford/Cummins) 100 KVA	04 Nos.
27. Diesel Generators Cummins 10 KVA	03 Nos.
28. Diesel Generators Cummins 60 KVA	01 Nos.

(C) MECH./CIVIL:

29. Compressors P100 INGERSOL RAND	02 Nos.
30. Diesel Compressor Rolls Royce (England) 350 Cfm.	02 Nos.
31. Diesel Compressor Atlas Capco (USA.) 125 Cfm.	01 No.
32. Diesel Compressor AIRMAN 665 Cfm.	01 No.
33. Electrical Compressor Atlas Capco 600 Cfm.	01 No.
34. Mobile Air Compressors ATLAS COPCO & Ingersoll-Rand	03 Nos.
35. Jack Hammers. INGERSOL-RAND	08 Nos.
36. Sand Blasting Unit with compressor	03 Nos.
37. Concrete Mixture with diesel engine for 2 bags of cement	01 Nos.
38. Petrol Compactors	06 Nos.



39. Sand Casting Unit	02 Nos.
40. Petrol Vibrators for concrete of 1½” needle	05 Nos.
41. M S Shuttering Plates	400 Sqm.
42. Scaffolding Pipes & Clamps for above shuttering plates.	
43. Scaffolding 3 M x 10 M height.	20 Sets.

(D) MATERIAL HANDLING:

44. Petti Borne 4 x 4 Hydraulic Crane 16 Tons with 72 ft. Boom.	01 No.
45. Petti Borne 4 x 4 Hydraulic Crane 20 Tons with 100 ft. Boom.	01 No.
46. Hoist, Chain Block Tripods	01 No.
47. Lifter 5 Tons	01 No.
48. Shahzore Diesel Truck Transportation	02 Nos.
49. Mazda Diesel Truck Transportation	01 No.
50. Mobile Water Tank of 10,000 Liters	02 Nos.

(E) LIGHT GAUGE STEEL STRUCTURE:

51. Scottsdale Cold Roll Former (New Zealand) Capacity 0.4mm to 1mm thick sheet

(F) MATERIAL TESTING EQUIPMENT

52. Hardness Tester	01 No.
53. Sound Tester	01 No.
54. Coating thickness ECHOMETER	01 No.
55. Hydro Testing Equipment for Tanks and Vessels	01 No.

Office Equipment:

1. Personal Computer Core to Duo Intel	20 No.
2. HP Draft Pro Plus Plotter. (7550)	02 No.
3. HP Wide Format A3 (7110)	02 No.
4. HP Scanner A3.	02 No.
5. HP Laser Jet Printers 1020 series	03 No.
6. HP Laser Jet Printer 1005 series	04 No.
7. Color Printer	02 Nos.
8. Powder Photocopier GESTETNER	01 No.
9. Special Engineering Software:	
• Mechanical Desktop/Auto Cad and several other software running under Microsoft Windows 7 and Microsoft Windows 8.	
• Structural Software Eagle Point StruPro	
• 2D/3D Frame Analysis software	
• Steel Roof Design.	
• Scottsdale Steel System	
• Website and online information services.	
• Complete LAN Networking.	
• Wireless Networking	



FIRM STATUS

FIRM TITLE : H H TECHNOFAB CORPORATION

Head Office : Plot # 202, 2nd Floor, 12-C, Shahbaz Commercial Lane 4, Phase 6, DHA, Karachi, Pakistan.

Factory : C/1, Plot No. B1 & B2, Sector 16, Korangi Industrial Area, Karachi.
Phone: 0321-2381304-6 Fax: 9221-5060975
Email: info@hhtechnofab.com
Web: www.hhtechnofab.com

Workshop # 2 : Plot No. 7/1, Sector 17, Korangi Industrial Area, Karachi.

Workshop # 3 : Plot 1, Sector F/8, Korangi Industrial Area, Karachi.

Firm Status : Partnership

Commencement : 1982

NTN : 2291609-1
GST No. : 12-00-8300-216-82

Categories of business: 1. Steel Structure Designing, Fabrication & Erection
2. Installation of Plant & Machinery
3. Mechanical Works (Manufacturing/Engineering Works)
4. Pre-Engineered Buildings with Structure
5. Fuel Storage Tanks and Generator Canopies

Registered with associations:

- Chamber of Commerce and Industries
- Pakistan Engineering Council